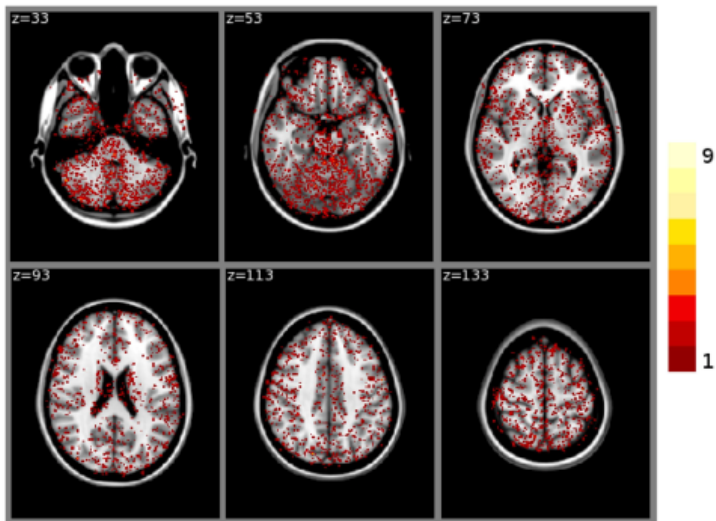


# Reproducibility of neuroimaging analyses across operating systems

*Tristan Glatard<sup>1,2</sup>, Lindsay B. Lewis<sup>1</sup>, Rafael Ferreira da Silva<sup>3</sup>, Reza Adalat<sup>1</sup>, Natacha Beck<sup>1</sup>, Claude Lepage<sup>1</sup>, Pierre Rioux<sup>1</sup>, Marc-Etienne Rousseau<sup>1</sup>, Tarek Sherif<sup>1</sup>, Ewa Deelman<sup>3</sup>, Najmeh Khalili-Mahani<sup>1</sup> and Alan C. Evans<sup>1\*</sup>*

Frontiers Neuroinformatics, volume 9, article 12, 2015.



**FIGURE 2 |** Sum of binarized differences between cortical tissue classifications obtained on cluster A and cluster B (FSL FAST, build 1,  $n = 150$  subjects). All binarized differences were resampled to the default MNI152 volume template.